

Simplify Your Network Management

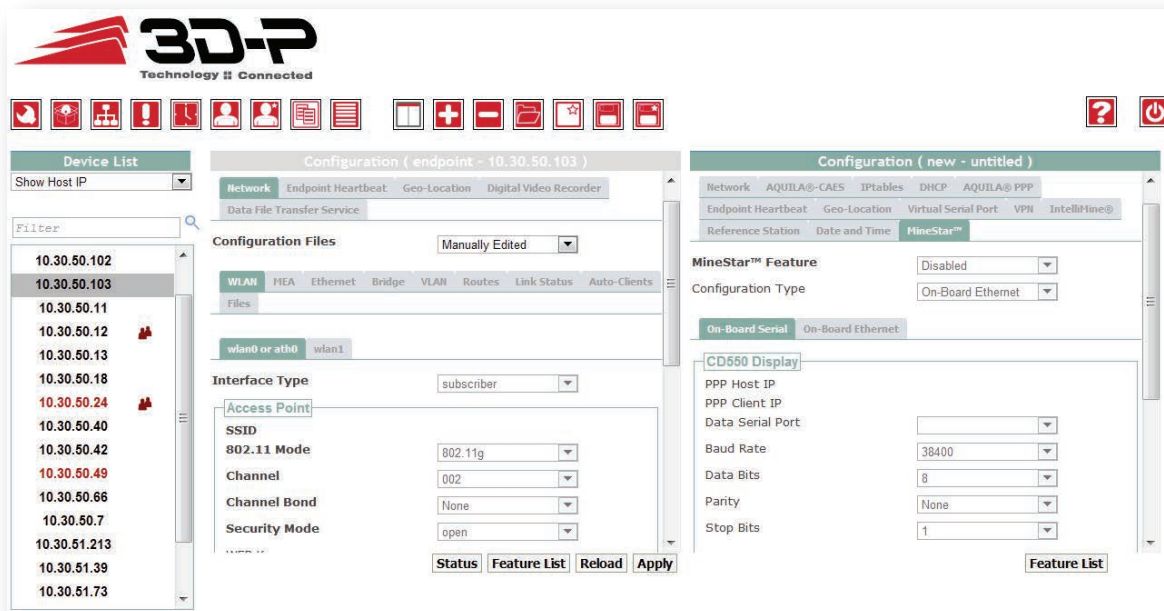
Endpoint Manager is a software utility that allows administrators to quickly and cost-effectively manage their Intelligent Endpoint™ (IEP) network.

Through an intuitive interface and with real-time diagnostics, all the IEPs on your network can be easily administered and deployed. Endpoint Manager gives you the ability to remotely audit your network, push firmware updates, or add features and update IEP configurations.

Manage Your Mine Specific Applications

With Endpoint Manager you can quickly configure your network without the need for extensive training. With support for application-based provisioning, you can simply pick from precompiled packages that support multiple vendor systems including Modular Intellimine®, Cat® MineStar™, Leica Jigsaw and P&H Centurion™.

Endpoint Manager also supports template-based provisioning. Templates allow standard configurations for your trucks, shovels, loaders and other machinery to be saved and applied to new Endpoints.



Centralized or Field Administration

Endpoint Manager is hosted on either a 1U rack-mount appliance or virtual machine typically installed on an office LAN to which Wireless Access Points are also connected. Endpoint Manager is accessed via a web interface, giving you the freedom to configure and manage your IEPs from anywhere on your wired or wireless network.

Flexible and Secure

Endpoint Manager uses role-based authentication and access restrictions so it can be used by IT staff and field technicians. You'll gain added flexibility while your network is protected. Endpoint Manager also supports encrypted connections between the appliance and the field and our fail-safe configuration ensures each update is secure and successful.

Improve Network Traffic Monitoring

3D-P's Intelligent Endpoints periodically transmit basic identity information to Endpoint Manager. This allows Endpoint Manager to automatically detect devices on the network and report on configuration changes and error conditions. Endpoint Manager also provides the ability to remotely collect the geo-location of your Endpoints, retrieve system logs, and audit all the devices on your network.



SNMP support on the Intelligent Endpoint allows you to assess the health of your network and monitor both wired and wireless traffic on any standard network monitoring tool such as OpenNSM, OpenView or Solarwinds.

Endpoint Manager Offers:

- 1U Appliance or Virtual Machine
- Encrypted Management
- Firmware Tamper Protection
- Automatic Failure Recovery
- Heartbeat Periodic Monitoring
- Application-Based Configuration
- Configuration Templates
- Add, Remove & Replace Device
- Role Management

Application and Feature Support:

- Modular™ Intellimine® (DISPATCH, MineCare, Provision, Roadmap)
- Cat® MineStar™ (Fleet, Terrain, Detect, Health, Command)
- Aquila / CAES
- Remote Firmware Push
- Bandwidth Limiting
- Geofencing
- And Many More

Advanced Network Support:

- Integrated VLAN
- Full QoS/ToS/DSCP
- Packet Tagging
- IPSEC VPN
- LT2P VPN
- SSL VPN
- RIP and Spanning Tree

SNMP Features:

- Version 1 / 2c / 3
- IETF Standard MIB
- Wireless Throughput Monitoring
- Wired Throughput Monitoring
- Latency Monitoring
- Routing Tables
- Easy MIB Walks

To learn more contact 3D-P at 1-800-955-9337 or online at www.3D-P.com.

Headquarters:
200, 8 Manning Close NE
Calgary, Alberta, Canada T2E 7N5

Other locations:
United States
South America
Australia